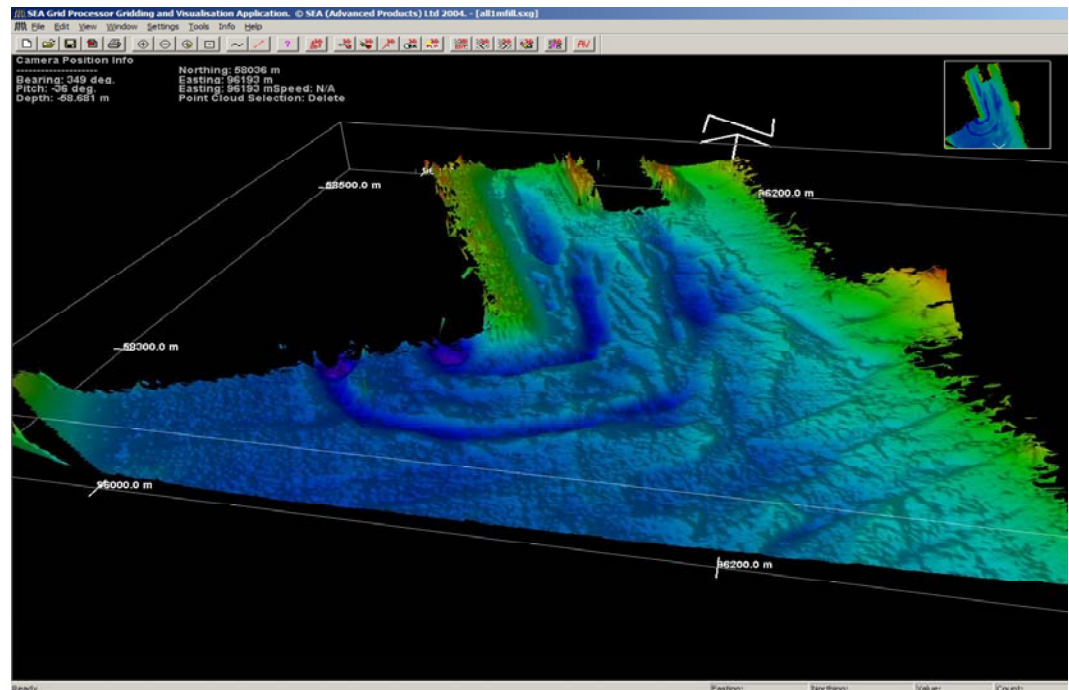


Location:	Mobile Bay, Alabama, USA
Date:	December 2006
System Used:	SWATHplus-H 468 kHz
Ancillaries:	CodaOctopus F180

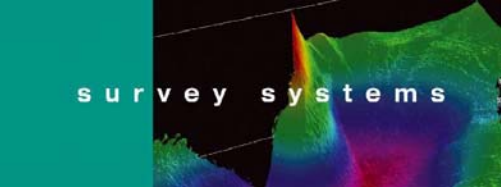
SWATHplus-H 468 kHz site survey for Fugro in Mobile Bay, Alabama. Survey of mooring quay and channel approaches for a rig move. Main survey area approximately 500m by 500m in water depths from 0m to 15m. Survey undertaken in under a day, follow-on survey from the John Chance Land Survey trials on the Mississippi. Motion sensing and positioning using a Coda-Octopus F180. Height control using observed tides from a local NOAA tide station.



Survey site – Mobile Bay



Surveyed area



Survey Note No.: 0601

This page is intentionally blank



Email: info@sea.co.uk

SEA Copyright 2008



Web: www.sea.co.uk