

Location:	Mola di Bari, Italy
Date:	October 2006
System Used:	SWATHplus-H 468 kHz
Ancillaries:	CodaOctopus F180

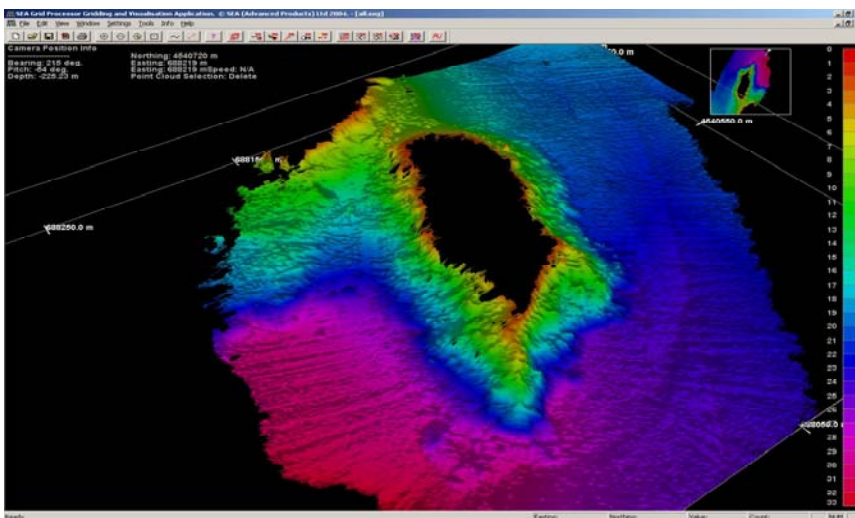
SWATHplus-H trial survey for STES, Mola di Bari. Survey conducted along the coast to monitor the cliffs and caves at Polignano a Mare. Water depths from 0m to 30m. Survey undertaken in a day, with one day's preparation and mobilisation in Mola di Bari. Motion sensing and positioning using a Coda-Octopus F180.



Sports fishing boat used for survey

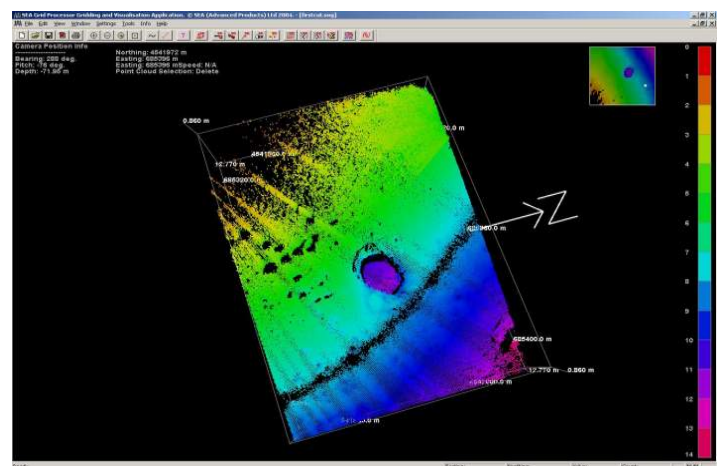


Coast line at Polignano a Mare



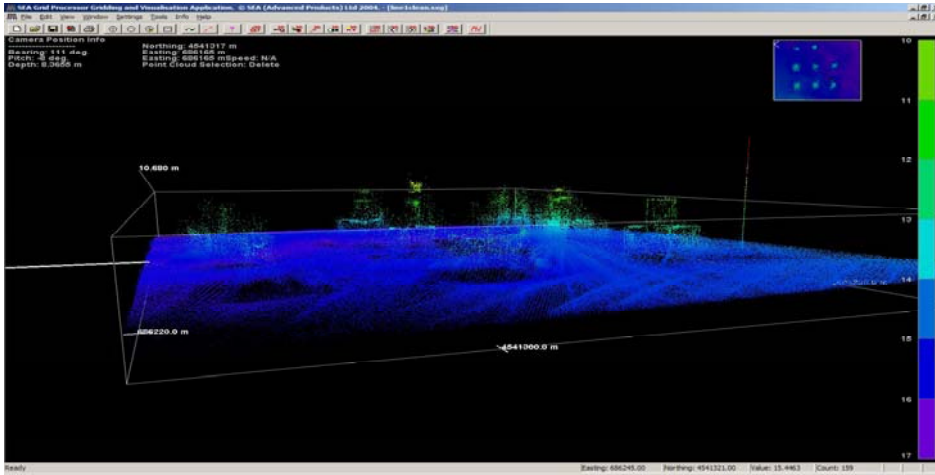
3d colour bathymetry view of an island

A 'blue hole' collapsed cave

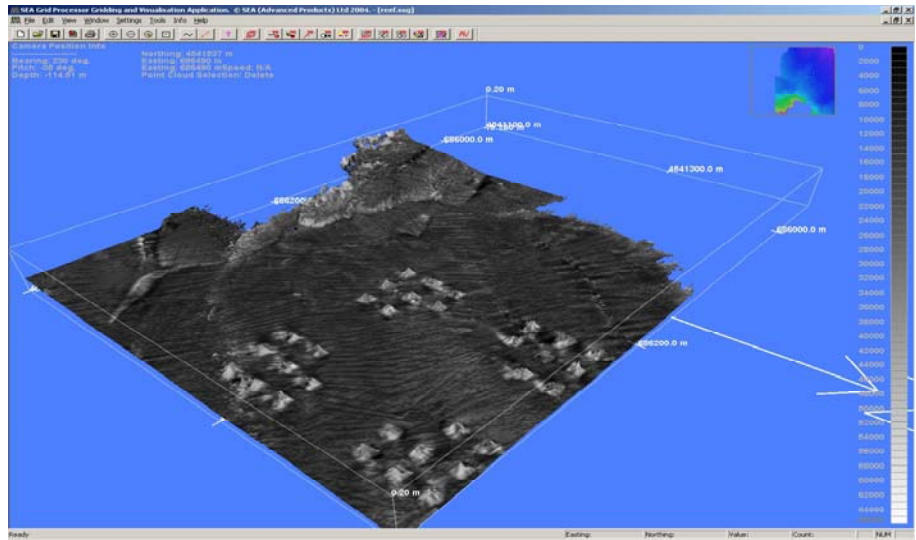




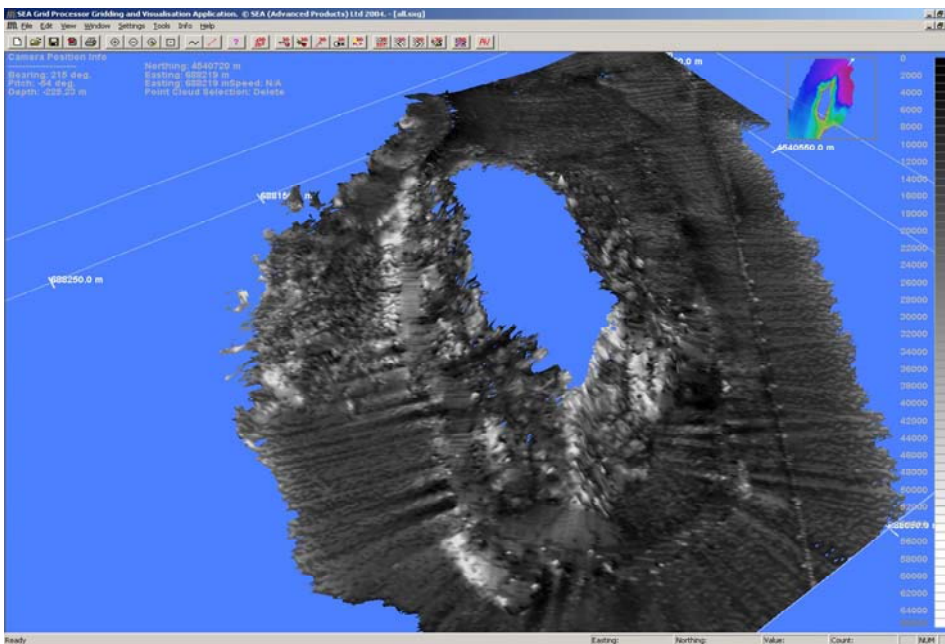
Survey Note No.: 0604



3d point cloud showing pyramid artificial reef structures



3d sidescan view of the pyramid artificial reef structures



3d Sidescan view of an island showing a pipeline