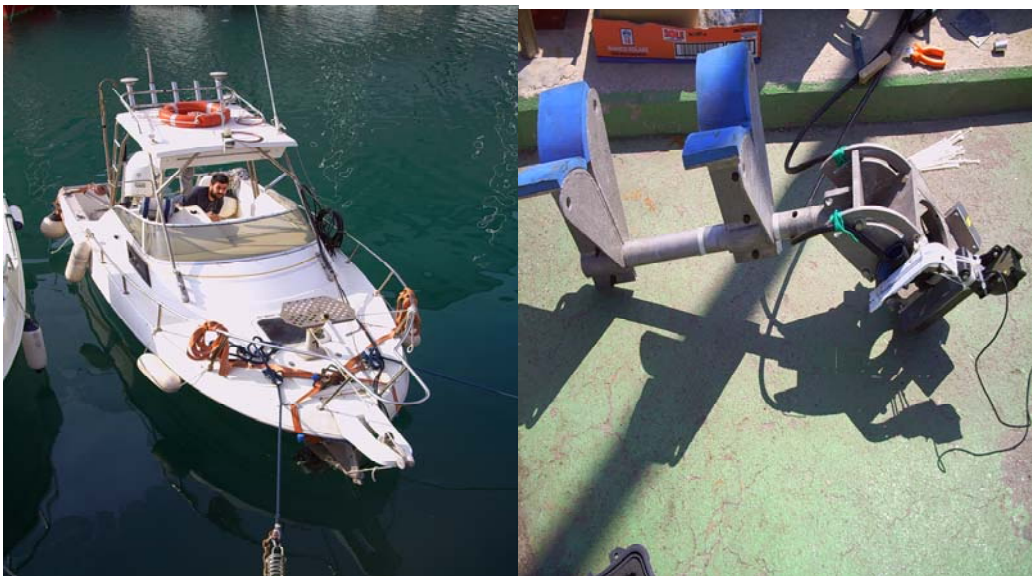
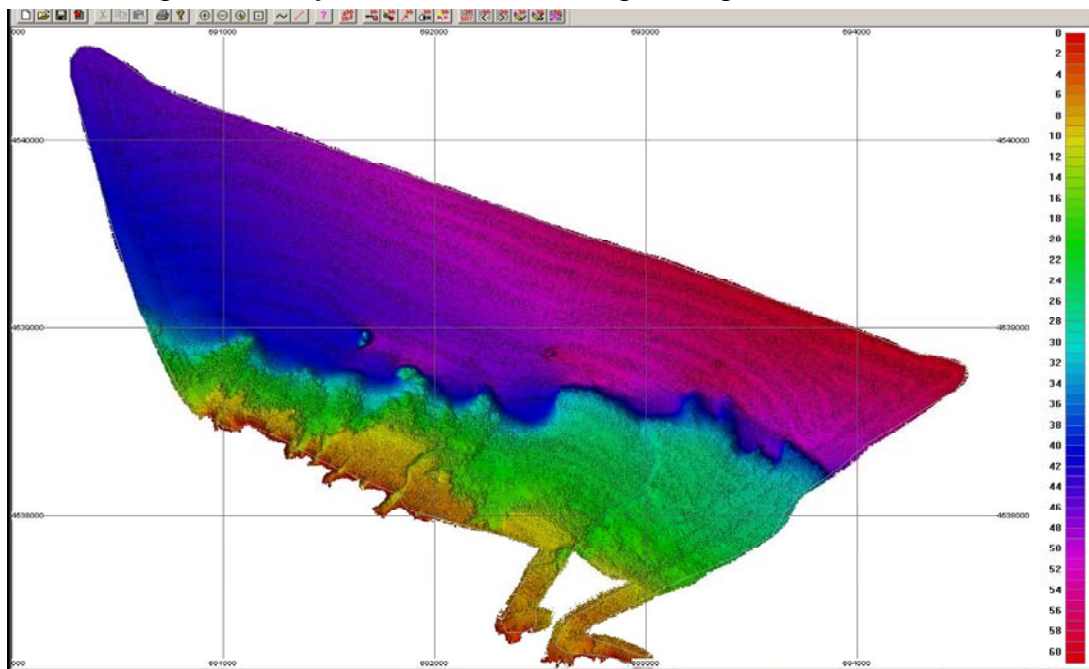


Location:	<b>Monopoli, Italy</b>
Date:	<b>May 2006</b>
System Used:	<b>SWATHplus-H 468 kHz</b>
Ancillaries:	<b>CodaOctopus F180, Thales Z-Max RTK</b>

SWATHplus-H 468 kHz survey for a local survey company in an area of the coast due for development. The survey consisted of a 2km by 4km lozenge with a smaller baseline along the coast. Water depths ranged from 0m to 60m. Survey undertaken in a day, with a day of preparation and mobilisation in Monopoli beforehand. Motion sensing and positioning using a Coda-Octopus F180 and a Thales Z-Max RTK used for height control.



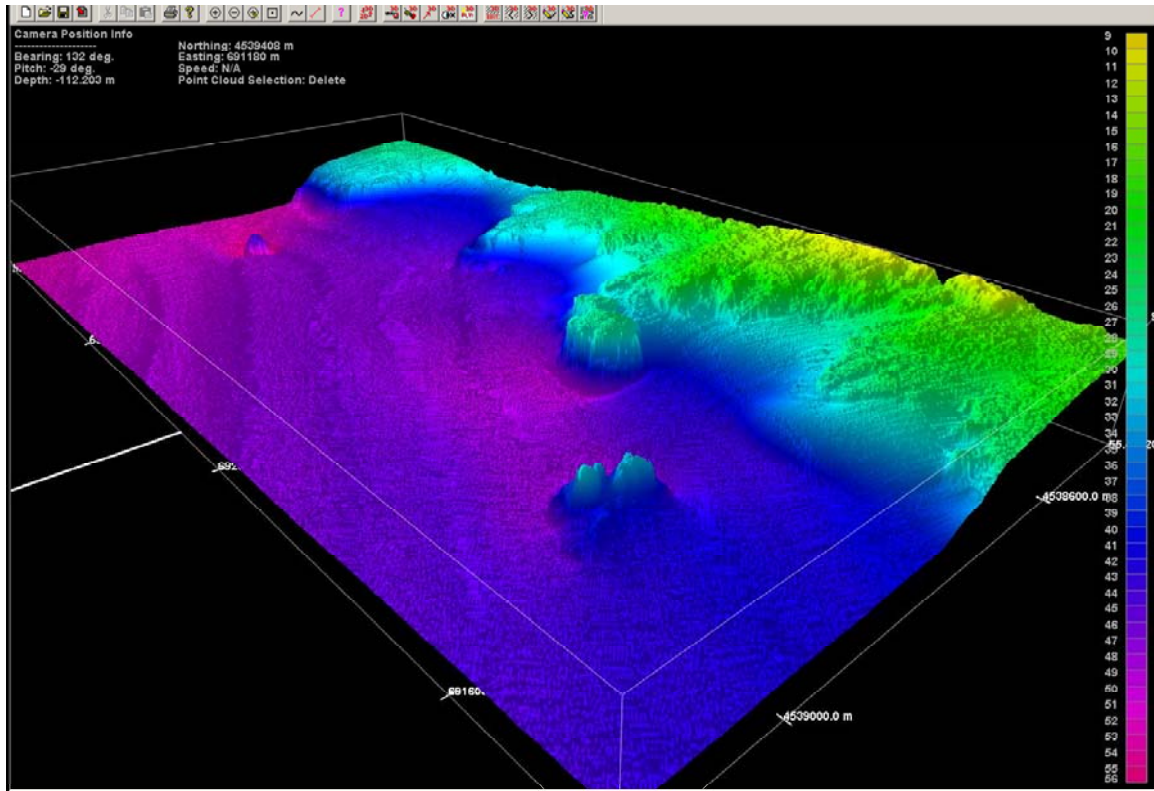
*Image of survey vessel and mounting arrangement on the dock*



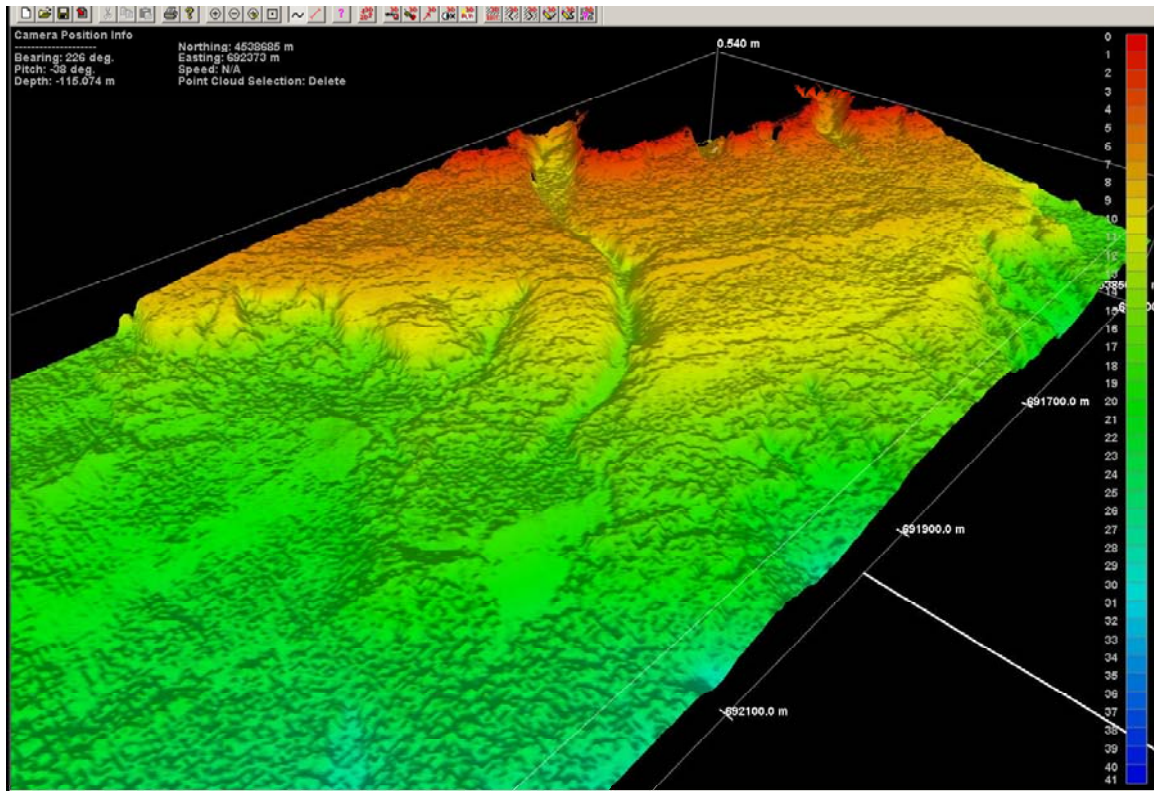
*Bathymetry of the survey area.*



Survey Note No.: 0610



Detail of bathymetry showing outcropping limestone platforms.



Detail of bathymetry on the limestone platform