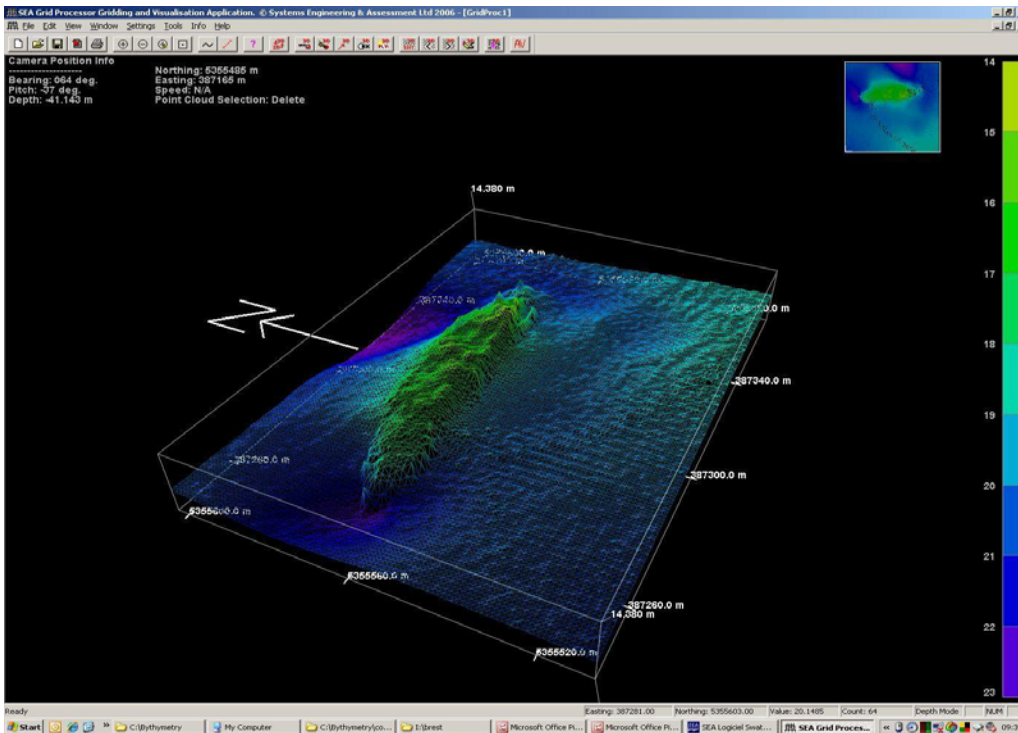
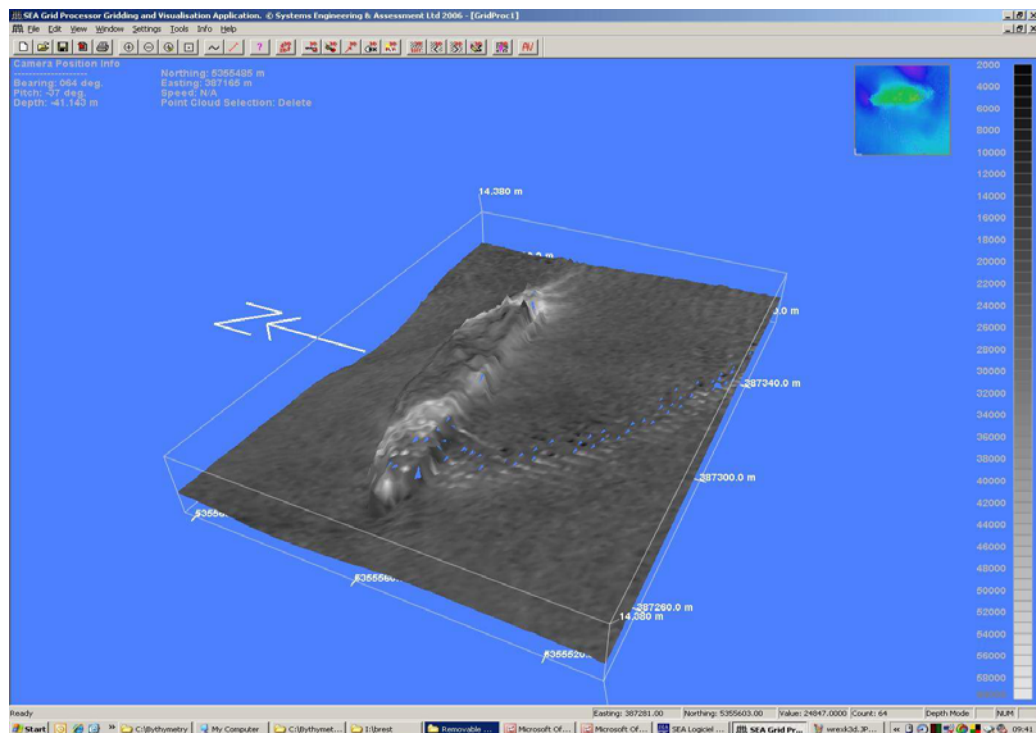


Location:	Brest Harbour, France
Date:	June 2007
System Used:	SWATHplus-H 468 kHz

SWATHplus –H demonstration conducted in Brest Harbour.

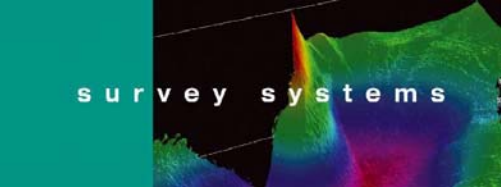


3d bathy view of a wreck



3d side scan view of wreck





Survey Note No.: 0704

This page intentionally left blank



Email: info@sea.co.uk

SEA Copyright 2008



Web: www.sea.co.uk